

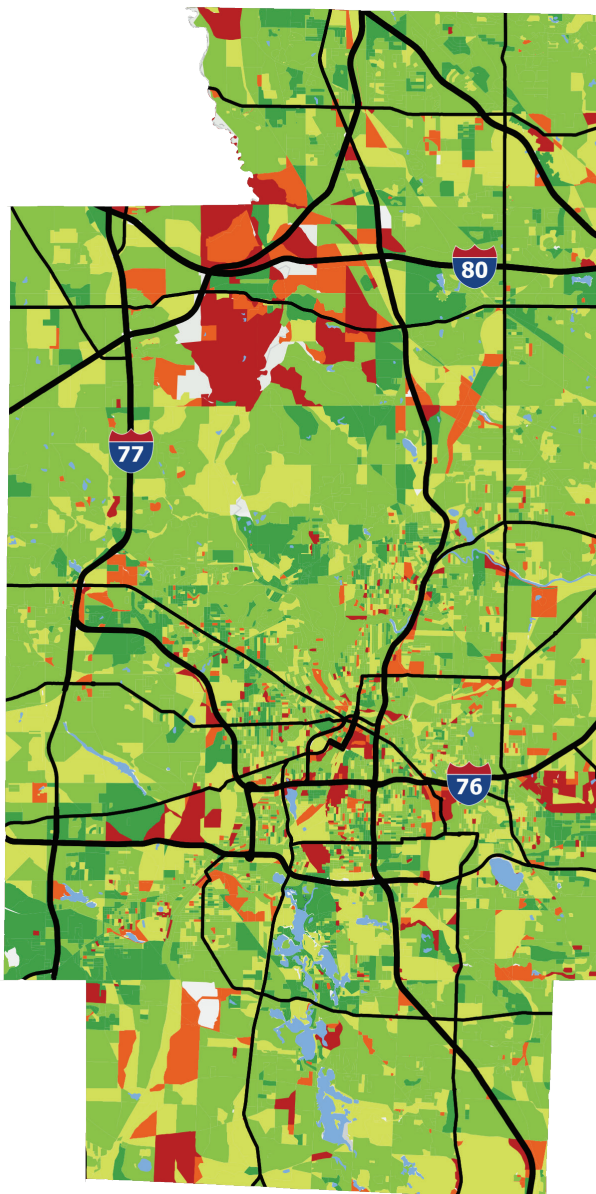
SUMMIT COUNTY

broadband profile

BroadbandOhio

Ohio

Department of
Development



0-9 Mbps

10-24 Mbps

25-49 Mbps

50-100 Mbps

100+ Mbps

State Route

bodies of water

11%

of the populated area

& 5%

of households

**DO NOT HAVE ACCESS
TO MINIMUM 25/3 Mbps**

the county has

410 mi²

of populated area

▶ 44 mi² are unserved

238,057 households

▶ 12,540 are below 25/3

33%

below 10/1 Mbps

■ 4,085 households

This map is based on a rating system developed by Reid Consulting Group, LLC. Data sources include Ookla Speedtest Intelligence® data licensed by InnovateOhio from the State of Ohio for the months of February 2020 through August 2021, carrier filings of available speeds with the FCC (Form 477), carrier reports of actual broadband deployments to USAC (HUBB), RDOF Phase 1 eligibility and E-911/LBRS household locations.[†]

THE METHODOLOGY

breaking down the data

BroadbandOhio



Department of
Development

About the Mapping

This map is based on a rating system developed by Reid Consulting Group, LLC. Data sources include Ookla Speedtest Intelligence® data licensed by InnovateOhio from the State of Ohio for the months of February 2020 through August 2021, carrier filings of available speeds with the FCC (Form 477), carrier reports of actual broadband deployments to USAC (HUBB), RDOF Phase 1 eligibility and E-911/LBRS household locations.[†]

Unserved and underserved ratings are color coded at the census block level:

0-9 Mbps	Red: Less than 10/1 Mbps
10-24 Mbps	Orange: At least 10/1 Mbps and less than 25/3 Mbps
25-49 Mbps	Yellow: At least 25/3 Mbps and less than 50/10 Mbps
50-100 Mbps	Light Green: At least 50/10 Mbps and less than 100/20 Mbps
100+ Mbps	Dark Green: Greater than 100/20 Mbps

We conducted analysis of the raw Ookla® data for the months of February 2020 through August 2021, applying the following filters:

Filter

Include desktop, iOS, and Android app results*

Exclude results with GPS precision of greater than 200 meters**

Include only results from fixed broadband providers

**iOS and Android results were included only if the device was connected to wi-fi during the speed test.*

***To protect consumer privacy, Ookla® limits location precision to +/-100 meters. As a result, a single location may include multiple households and many individual tests.*

Using the Ookla® results we rated each location based on the average of up/down speeds for all tests at that location. We then graded census blocks based on the median up/down speed of all locations within each block. Block-by-block ratings were further refined based on RDOF eligibility, past HUBB deployments, and Form 477 data. For blocks with no Ookla test results, extrapolated ratings were assigned where possible via comparative analysis of population density, Form 477 coverage, HUBB data, and RDOF Phase 1 awards. Areas that could not be assigned an extrapolated rating are shown in white on the map.

[†]US Census household counts were used instead of LBRS in the following counties: Auglaize, Butler, Carroll, Clermont, Cuyahoga, Delaware, Franklin, Geauga, Hamilton, Harrison, Henry, Highland, Mahoning, Medina, Tuscarawas, Union, and Warren.